

# D-Link

## Quick Installation Guide

This product works with the following operating system software: **Windows XP, Windows 2000, Windows Me, Windows 98SE**



## DWL-G520+

AirPlus G+ 2.4GHz  
Wireless PCI Adapter

## Before You Begin

You must have at least the following:

- A desktop computer with an available 32-bit PCI slot
- At least a 300 MHz processor and 32MB of memory
- An 802.11g or 802.11b Access Point (for Infrastructure Mode) or another 802.11g or 802.11b wireless adapter (for Ad-Hoc; Peer-to-Peer networking mode.)

## Check Your Package Contents

These are the items included with your DWL-G520+ purchase:



**DWL-G520+ AirPlus G+ 2.4GHz Wireless PCI Adapter**



**CD-ROM (containing Drivers, Manual and Warranty)**

If any of the above items are missing, please contact your reseller.

# 1

## Insert the D-Link CD-ROM Into Your Computer

**Turn on the computer** and **Insert** the **D-Link AirPlus G+ DWL-G520+ Driver CD** in the CD-ROM drive.

The step-by-step instructions that follow are shown in **Windows XP**. The steps and screens are similar for the other Windows operating systems



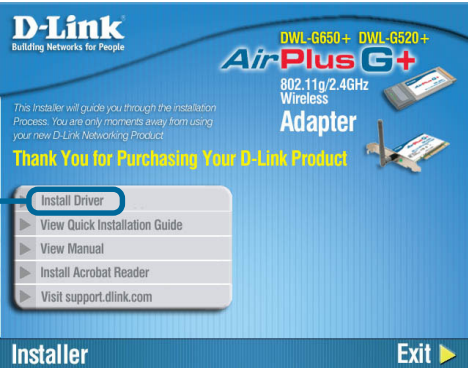
Do **NOT** install the DWL-G520+ Wireless PCI Adapter into your computer before installing the driver software from the D-Link CD!

# 1

## Continued...

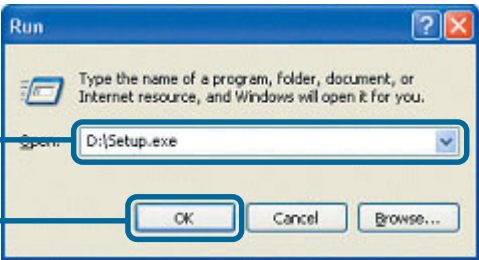
The Install Screen will appear.

Click **Install Drivers**



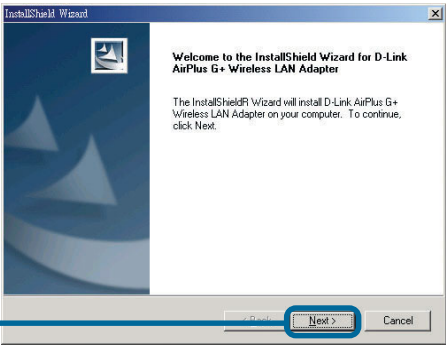
If the CD Autorun function does not automatically start on your computer , type “D:\Setup.exe.” If it does start, proceed to the next screen.

Type **“D:\Setup.exe.”**

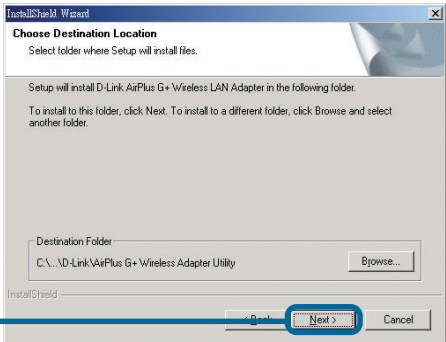


**!** The letter **“D”** represents the letter of the CD-ROM drive. Your CD-ROM drive may be a different drive letter.

Click **OK**

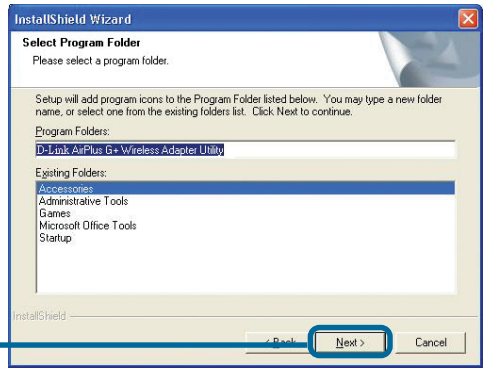


Click **Next**

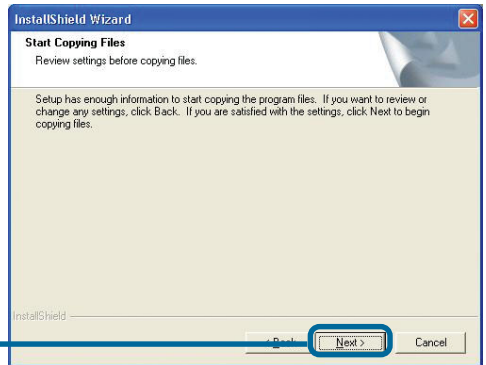


Click **Next**

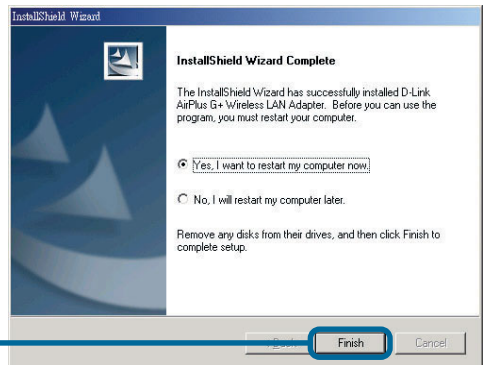
Click **Next**



Click **Next**



Click **Finish**



**Shut down your computer**

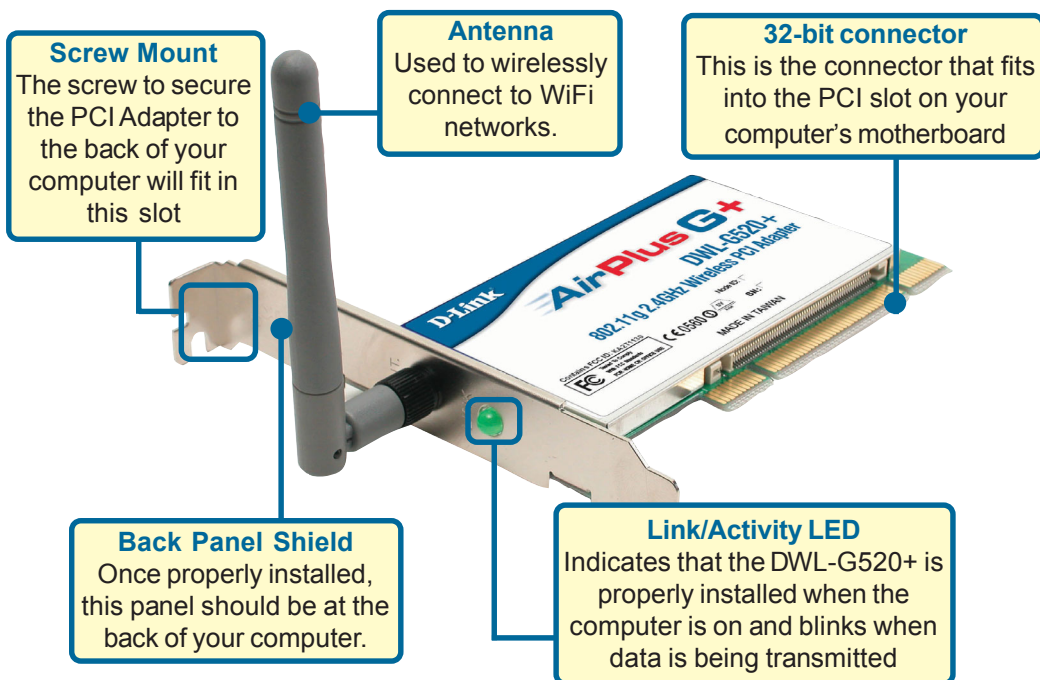
## 2 Installing the DWL-G520+ Wireless PCI Adapter in Your Computer

- A.** Make sure to turn off your computer and unplug the power cord.  
Remove the back cover of the computer.
- B.** Install the DWL-G520+ carefully and firmly seat it into an available PCI slot (which is usually “white” or “cream” colored).



**⚠** To avoid damage caused by static electricity, make sure to properly ground yourself by first touching a metal part of your computer to discharge any static electricity before working with the DWL-G520+ Wireless PCI Adapter.

- C.** Secure the DWL-G520+ back panel shield with a screw.
- D.** Replace the computer's cover.
- E.** Place the computer back in its normal position.
- F.** Attach the DWL-G520+'s antenna to the socket on the back panel shield.



# 3

## Restart Your Computer

When you restart your computer this **Found New Hardware Wizard (Windows XP)** screen will appear:

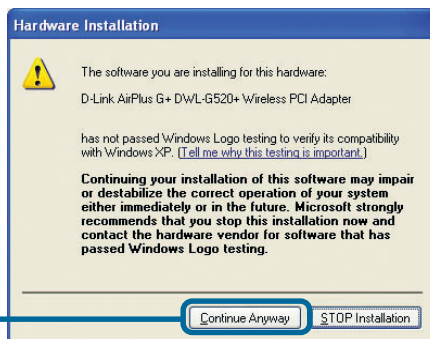
Select **Install the software automatically (Recommended)**

Click **Next**



**!** *For Windows XP:* This **Hardware Installation** alert screen may appear after the desktop computer restarts.

Click **Continue Anyway** to finalize the installation



Click **Finish** to finalize the installation.



## 3 Continued...



For Windows 2000, this **Digital Signature Not Found** screen may appear after your computer restarts.

Click **Yes** to finalize the installation.



The D-Link driver software for this device is undergoing Windows Logo testing. Microsoft certification is pending.

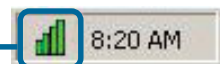
## 4 Your Installation is Complete!

After you've continued in Windows 2000, ME, or 98SE, the D-Link AirPlus G+ DWL-G520+ **Configuration Utility** will automatically start and the utility icon will appear in the bottom right hand corner of the desktop screen (systray). **If this icon appears GREEN, then you have successfully installed the DWL-G520+, are connected to a wireless network and are ready to communicate!**

If the utility icon does not appear, double-click the **shortcut icon** that has appeared on your desktop.



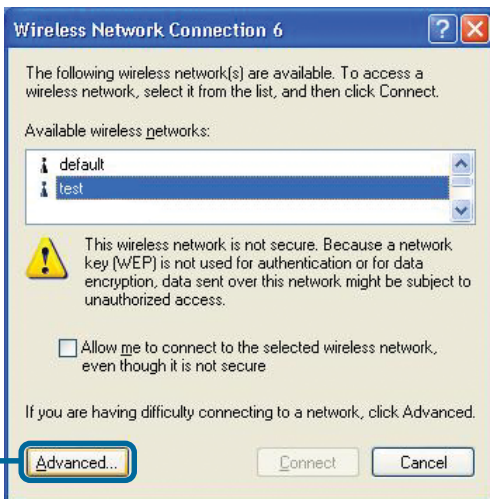
Double-click the **utility icon** to use the configuration utility.



# Appendix

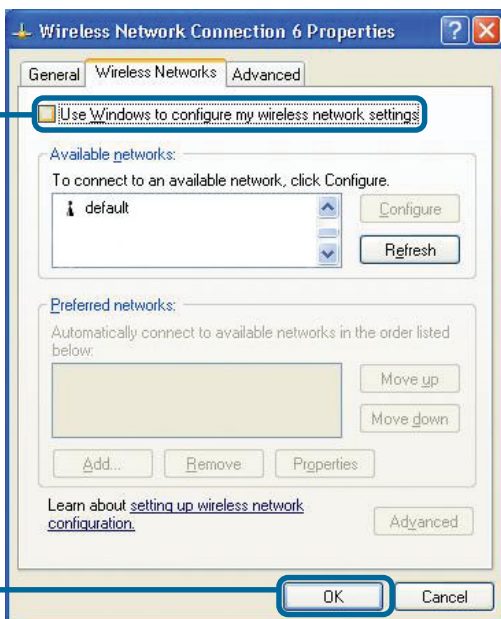
For Windows XP, if you wish to use the AirPlus G+ utility, please do the following steps.

Click the **XP Networking icon** to use the Zero Configuration Wireless Settings.



Click **Advanced**

Uncheck "Use Windows to configure my wireless network settings."



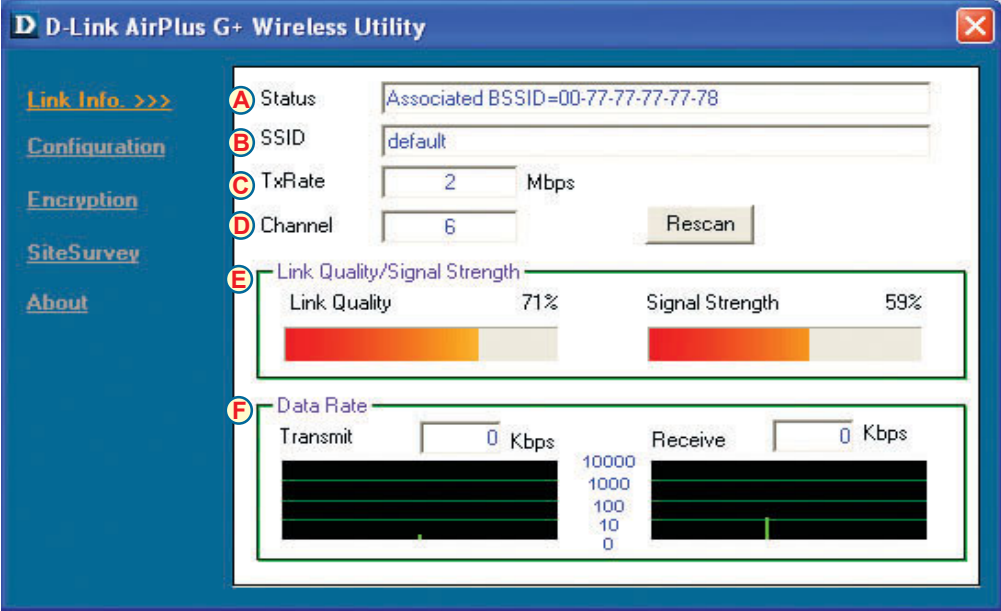
Click **OK**



# Appendix (Continued)

## Using the Configuration Utility

- A. Status:** Displays the MAC Address of the Access Point that is associated with the DWL-G520+.
- B. SSID:** The Service Set Identifier is the name assigned to the wireless network. The factory SSID setting is set to **default**.
- C. TxRate:** The default setting is **Auto**; meaning, TxRate settings are automatically determined by the DWL-G520+ depending on the distance from the access point.



- D. Channel:** Displays the channel information. By default, the channel is set to 6. Please note that the DWL-G520+ will automatically adjust channel depending on the Access Point.
- E. Link Quality / Signal Strength:** Displays the Link Quality for the DWL-G520+ wireless connection to the access point. The Signal Strength represents the wireless signal between the access point and the DWL-G520+. The percentage coincides with the graphical bar.
- F. Data Rate:** Graphically displays the statistics of data transmitted and received.



**G. SSID:** The Service Set Identifier is the name assigned to the wireless network. The factory SSID setting is set to **default**. Make changes here to match the SSID on existing Wireless Router or Access Point.

**H. Wireless Mode:** The factory setting is set to **Infrastructure**. Ad-Hoc mode is used for peer-to-peer networking.

**I. Channel:** By default, the channel is set to **6**. Channel selection is automatically adjusted by the DWL-G520+ depending on the channel setting of the access point selected for association. To change the channel settings, the **Wireless Mode** must be set to **Ad-hoc**.

D-Link AirPlus G+ Wireless Utility

**Link Info.**

**Configuration >>>**

**Encryption**

**SiteSurvey**

**About**

**G** SSID: default

**H** Wireless Mode: Infrastructure

**I** Channel: 6

**J** TxRate: Auto

Preamble: Long Preamble

**K** Power Mode: Continuous Access Mode

Speed Enhanced Mode

☐ Disable

☒ Enable

Apply Cancel

**J. TxRate:** You can adjust the transmission rate to get the best signal possible depending on your usage and your environment.

**K. Power Mode:** By default, Power Mode is set to Continuous Access Mode. **Continuous Access Mode** — this default setting consumes the most power. **Maximum Power Save** — this setting consumes the least power. **Power Save** — this setting consumes a moderate amount of power.

# IP Address Configuration

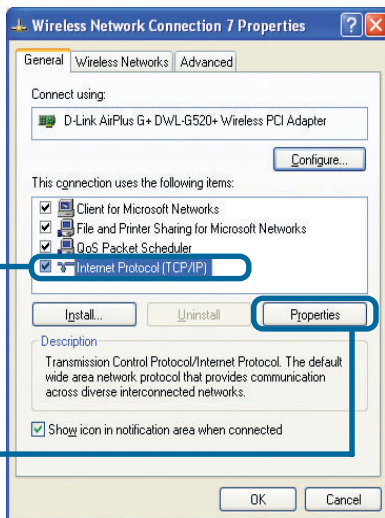
To connect to a network, **make sure the proper network settings are configured for DWL-G520+.**

## For Microsoft Windows XP:

Go to **Start > right click on My Network Places > select Properties > Double-click on the Network Connection** associated with the DWL-G520+.

Click **Internet Protocol (TCP/IP)**

Click **Properties**



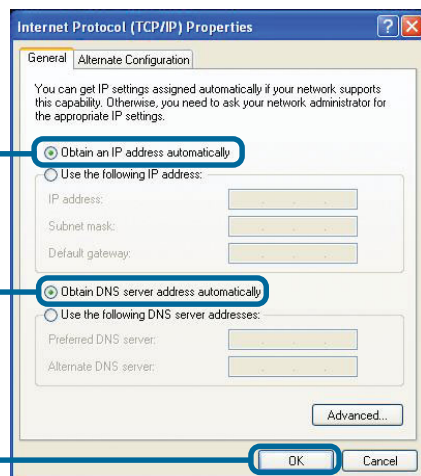
## Dynamic IP Address setup

Used when a **DHCP server** is available on the local network. (i.e. Router)

Select **Obtain an IP address automatically** (if the Wireless Router or Access Point has DHCP server enabled)

Select **Obtain DNS server address automatically**

Click **OK**



## Static IP Address setup

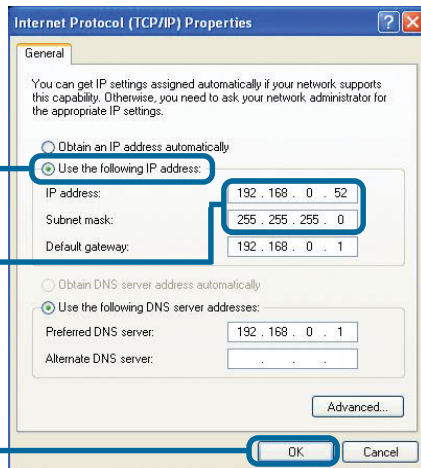
Used when a **DHCP server** is not available on the local network.

Select **Use the following IP address**

IP address: **192.168.0.52**  
Subnet mask: **255.255.255.0**

Input a static IP address in the same range as the Wireless Router or Access Point.

Click **OK**

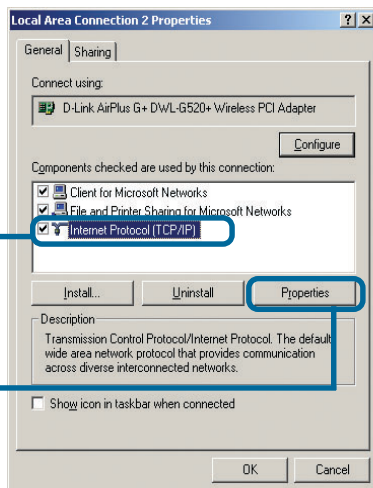


## For Windows 2000 users:

Go to **Start > Settings > Network and Dial-up Connections** > Double-click on the **Local Area Connection** associated with the DWL-G520+ > select **Properties**

Click **Internet Protocol (TCP/IP)**

Click **Properties**



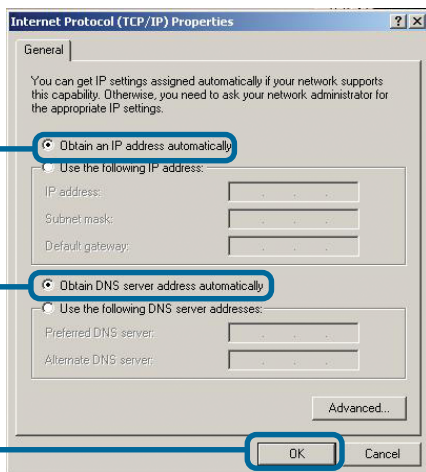
## Dynamic IP Address setup

Used when a **DHCP server** is available on the local network. (i.e. Router)

Select **Obtain an IP address automatically** (if the Wireless Router or Access Point has DHCP server enabled)

Select **Obtain DNS server address automatically**

Click **OK**



## Static IP Address setup

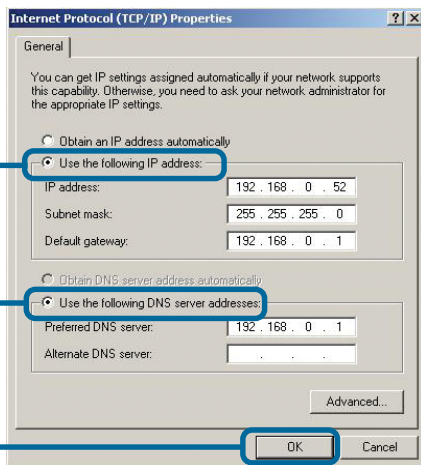
Used when a **DHCP server** is not available on the local network.

Select **Use the following IP address**

IP address: **192.168.0.52**  
Subnet mask: **255.255.255.0**

Input a static IP address in the same range as the Wireless Router or Access Point.

Click **OK**



# Technical Support

You can find software updates and user documentation on the D-Link website.

D-Link provides free technical support for customers within the United States and within Canada for the duration of the warranty period on this product.

U.S. and Canadian customers can contact D-Link technical support through our website, or by phone.

## Tech Support for customers within the United States:

### ***D-Link Technical Support over the Telephone:***

(877) 453-5465

24 hours a day, seven days a week.

### ***D-Link Technical Support over the Internet:***

<http://support.dlink.com>

[email:support@dlink.com](mailto:support@dlink.com)

## Tech Support for customers within Canada:

### ***D-Link Technical Support over the Telephone:***

(800) 361-5265

Monday to Friday 8:30am to 9:00pm EST

### ***D-Link Technical Support over the Internet:***

<http://support.dlink.ca>

[email:support@dlink.ca](mailto:support@dlink.ca)

## Tech Support for customers within the United Kingdom & Ireland:

### ***D-Link UK & Ireland Technical Support over the Telephone:***

+44 (0)20 7365 8440 (United kingdom)

+353 (0)12 421 061 (Ireland)

Monday to Friday 8:00 am to 10:00 pm

### ***D-Link Technical Support over the Internet:***

<http://www.dlink.co.uk>